

## **LINCS II Schematics**

### Section 06-04-08

Komatsu has made every effort to make this manual as accurate as possible based on the information available at the time of publication and printing. Continuous improvement and advancement of product design may cause changes to machines which may not have been included in this publication. Komatsu reserves the right to make changes and improvements at any time. To ensure the most current information, please contact your service center.

### Cab Wiring Diagram LINCS II

#### Front Frame Harness

#### Rear Frame Harness

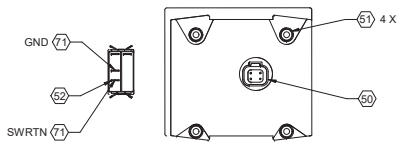
This Page Intentionally Left Blank

# **Cab Wiring Diagram LINCS II**

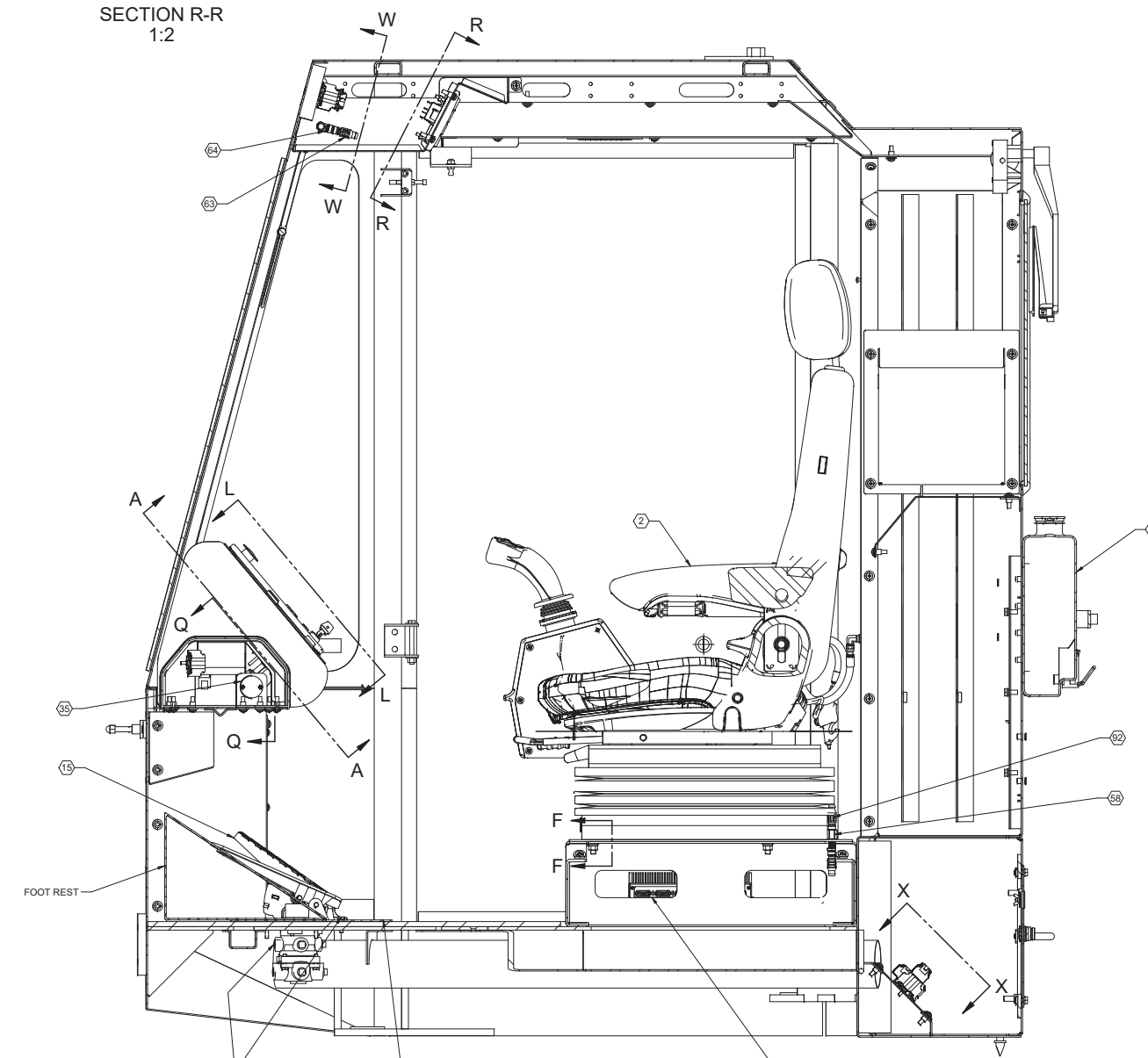




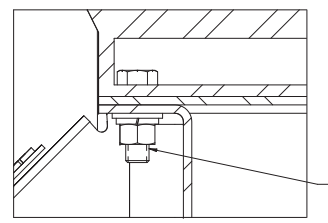
REV		DESCRIPTION	EN	DATE	CHK	APP
03		NO CHANGE THIS SHEET	1329391	7-20-16	JFM	KD JS



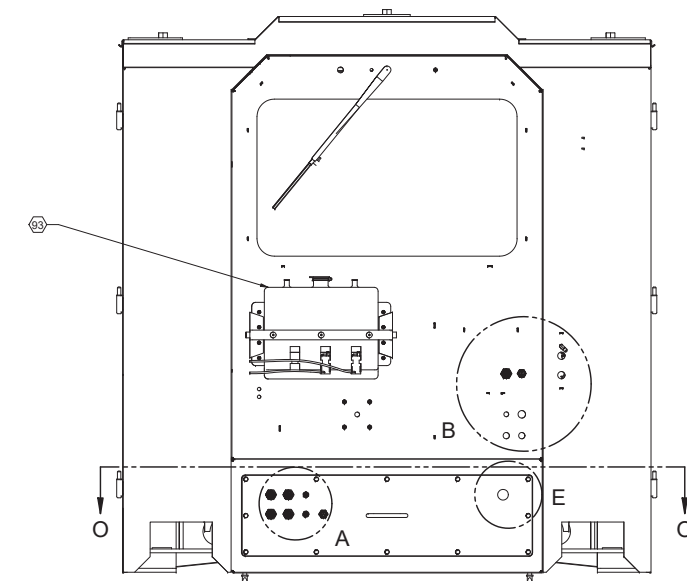
SECTION R-R  
1:2



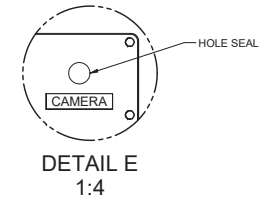
SECTION V-V  
1:4  
FROM TOP VIEW ON SHEET 1



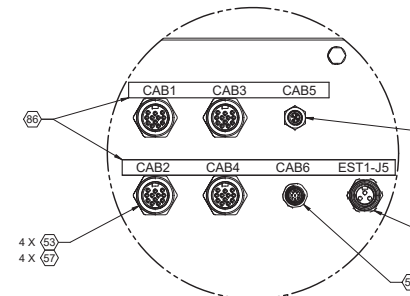
SECTION F-F  
1:1



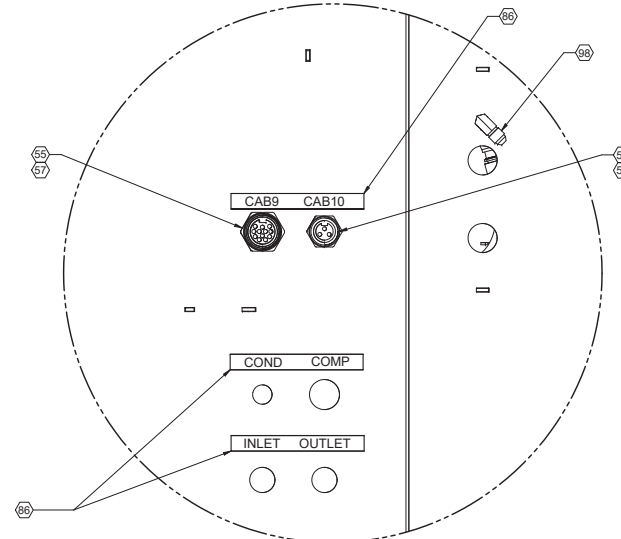
BACK VIEW OF CAB



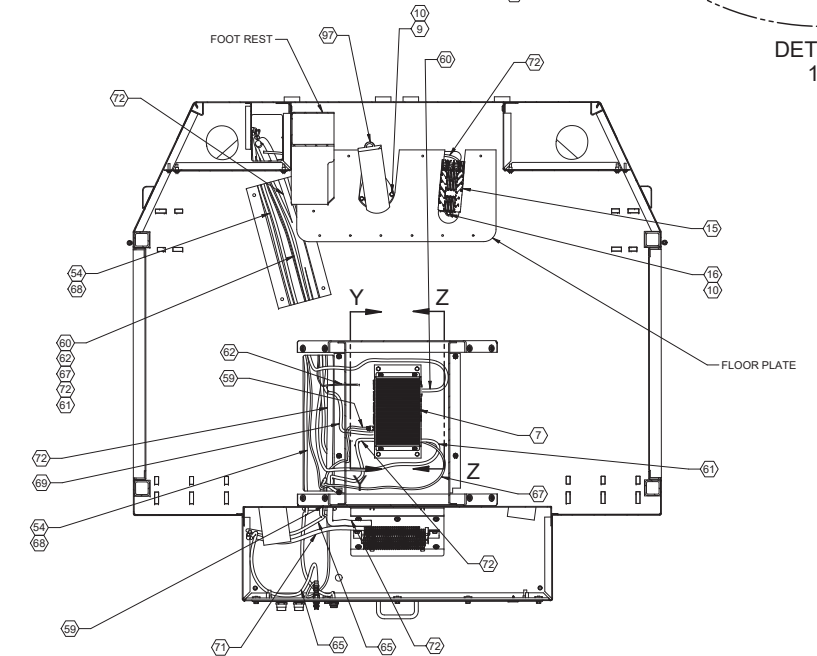
DETAIL E  
1:4



DETAIL A  
1:2



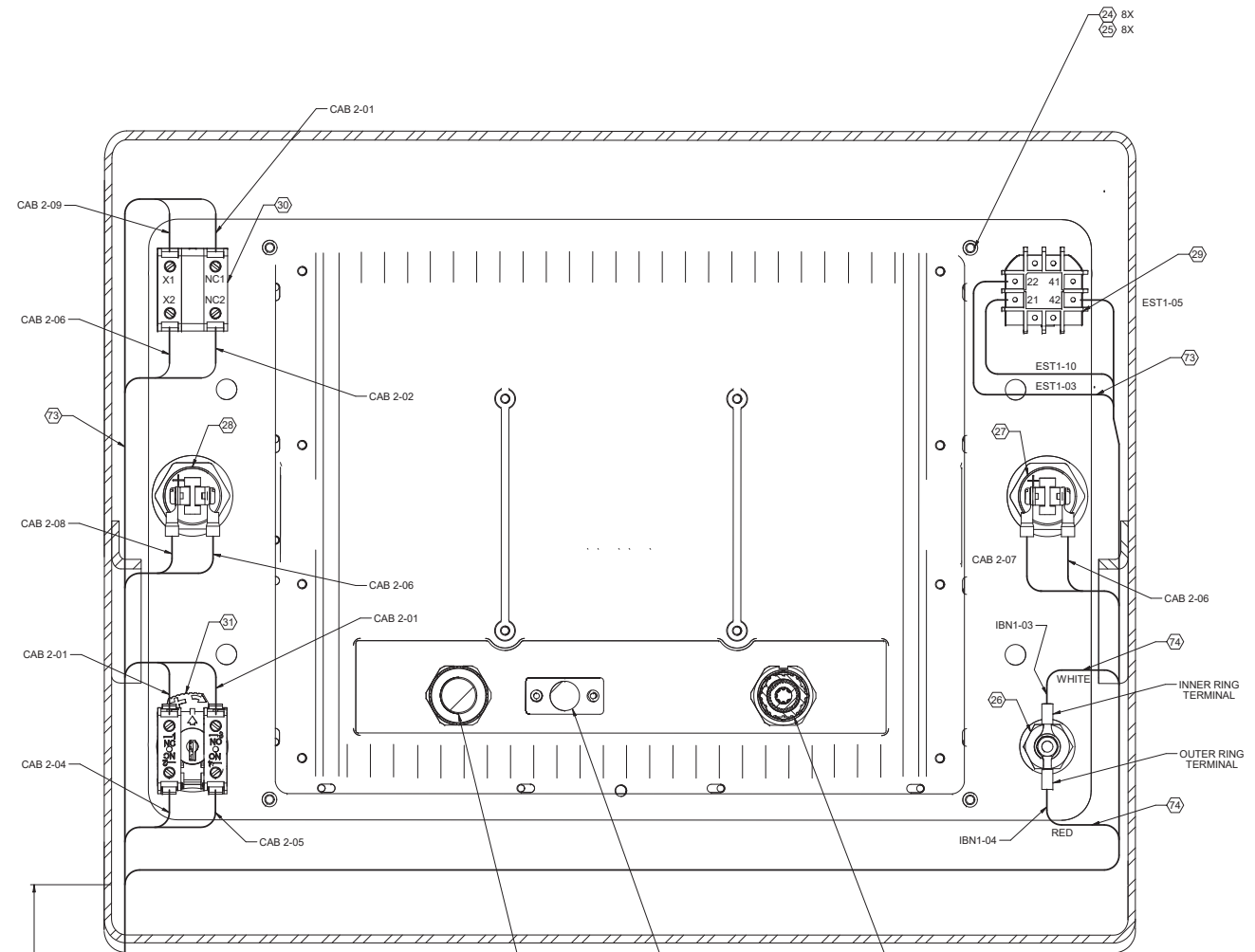
DETAIL B  
1:2



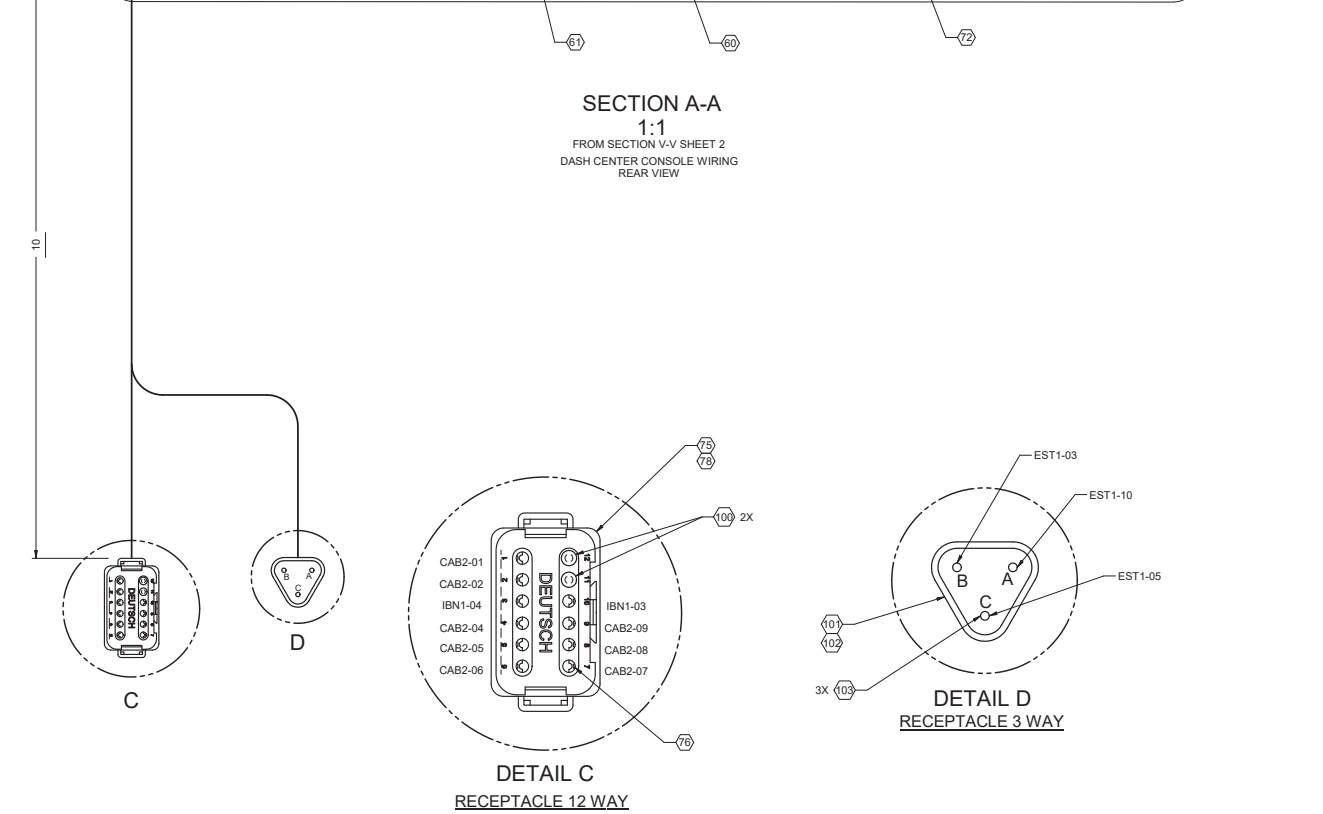
SECTION O-O

GP CAB WITH ELECTRICS		SCALE	1/8	DATE	5-21-12	DESIGNER	JMARTIN	PROJECT	4274640	SHEET	2 OF 5
E		DO NOT SCALE									

REV		DESCRIPTION	REVISIONS				
ZONE	REV		EN	DATE	CHK	APP	
03		NO CHANGE THIS SHEET	1329391	7-20-16	JFM	KD	JS

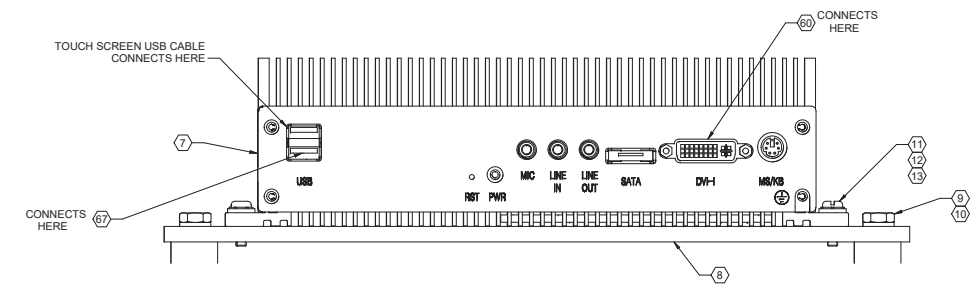


**SECTION A-A**  
1:1  
FROM SECTION V-V SHEET 2  
DASH CENTER CONSOLE WIRING  
REAR VIEW

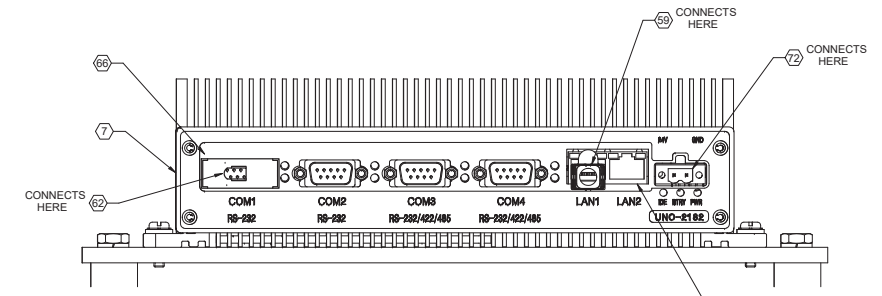


**DETAIL C**  
RECEPTACLE 12 WAY

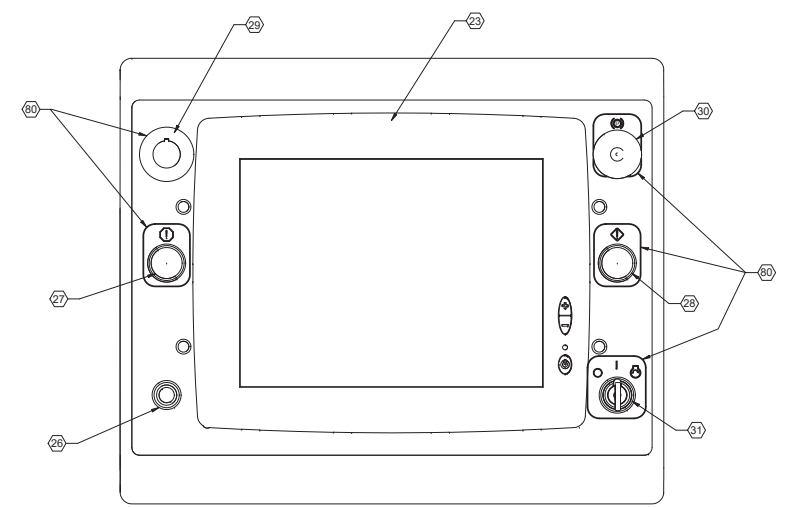
**DETAIL D**  
RECEPTACLE 3 WAY



**SECTION Z-Z**  
1:1  
FROM SECTION V-V SHEET 2

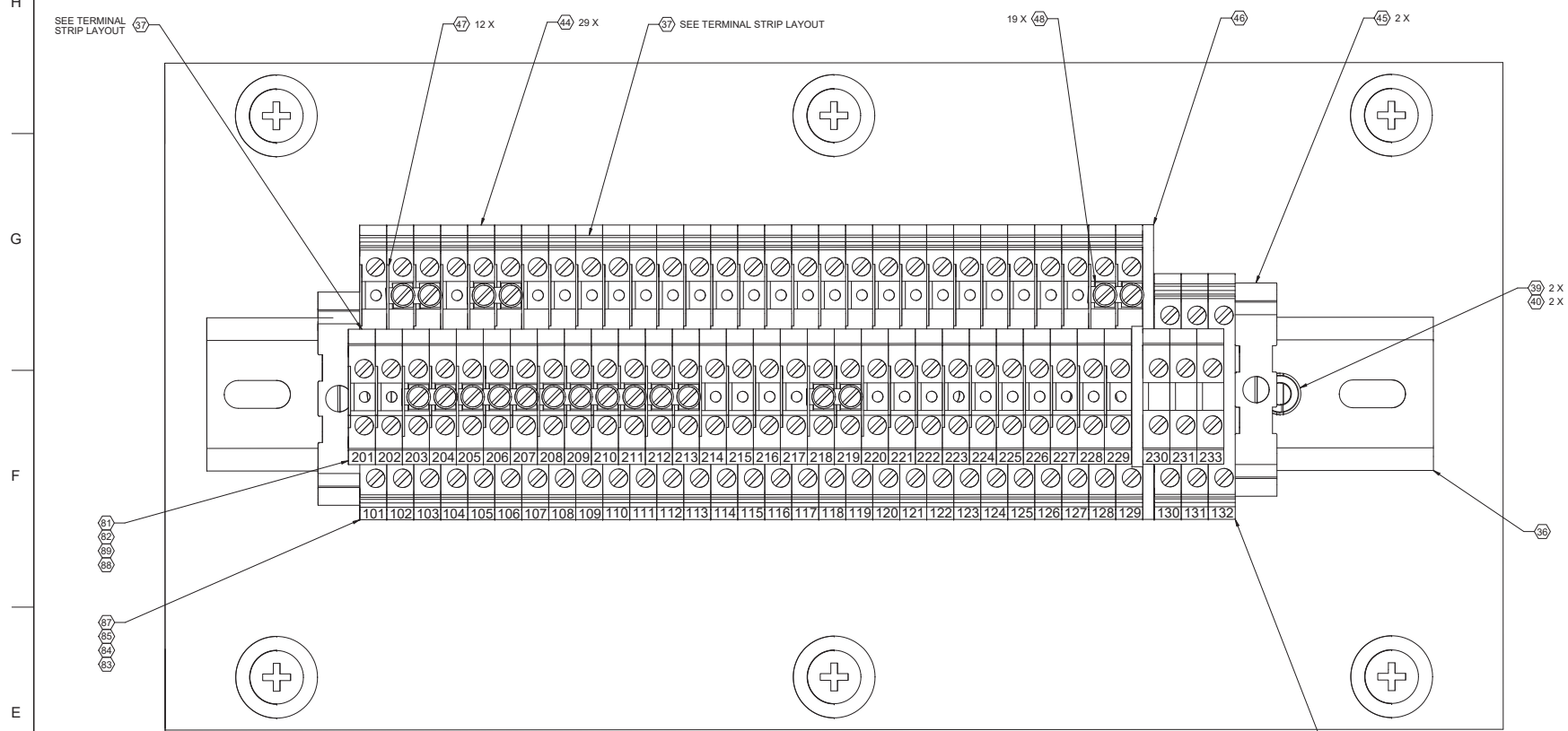


**SECTION Y-Y**  
1:1  
FROM SECTION V-V SHEET 2



**SECTION L-L**  
1:2  
FROM SECTION V-V SHEET 2  
DASH CENTER CONSOLE FRONT VIEW

REVISIONS						
ZONE	REV	DESCRIPTION	EN	DATE	CHK	APP
03		NO CHANGE THIS SHEET	1329391	7-20-16	JFM	KD JS



**SECTION X-X  
2:1**  
FROM SECTION V-V SHEET 2  
REAR DIN RAIL COMPONENTS

TURCK12 AND 3 PIN CONNECTORS		
CONNECTOR-PIN	WIRE COLOR	DESTINATION TERMINAL BLOCK
CAB1-01	ORN	101-L
CAB1-02	BLU	104-L
CAB1-03	WHT/BLK	208-L
CAB1-04	RED/BLK	209-L
CAB1-05	GRN/BLK	102-L
CAB1-06	ORN/BLK	105-L
CAB1-07	BLU/BLK	107-L
CAB1-08	BLK/WHT	108-L
CAB1-09	GRN	109-L
CAB1-10	RED	110-L
CAB1-11	WHT	111-L
CAB1-12	BLK	112-L
CAB2-01	ORN	113-L
CAB2-02	BLU	114-L
CAB2-03	WHT/BLK	115-L
CAB2-04	RED/BLK	116-L
CAB2-05	GRN/BLK	117-L
CAB2-06	ORN/BLK	118-L
CAB2-07	BLU/BLK	119-L
CAB2-08	BLK/WHT	120-L
CAB2-09	GRN	121-L
CAB2-10	RED	122-L
CAB2-11	WHT	123-L
CAB2-12	BLK	124-L
CAB3-01	ORN	201-L
CAB3-02	BLU	202-L
CAB3-03	WHT/BLK	203-L
CAB3-04	RED/BLK	205-L
CAB3-05	GRN/BLK	210-L
CAB3-06	ORN/BLK	204-L
CAB3-07	BLU/BLK	206-L
CAB3-08	BLK/WHT	211-L
CAB3-09	GRN	212-L
CAB3-10	RED	214-L
CAB3-11	WHT	215-L
CAB3-12	BLK	216-L
CAB4-01	ORN	217-L
CAB4-02	BLU	218-L
CAB4-03	WHT/BLK	220-L
CAB4-04	RED/BLK	221-L
CAB4-05	GRN/BLK	222-L
CAB4-06	ORN/BLK	223-L
CAB4-07	BLU/BLK	224-L
CAB4-08	BLK/WHT	225-L
CAB4-09	GRN	226-L
CAB4-10	RED	227-L
CAB4-11	WHT	228-L
CAB4-12	BLK	229-L
CAB9-01	ORN	217-R
CAB9-02	BLU	218-R
CAB9-03	WHT/BLK	220-R
CAB9-04	RED/BLK	221-R
CAB9-05	GRN/BLK	128-R
CAB9-06	ORN/BLK	129-R
CAB9-07	BLU/BLK	127-L
CAB9-08	BLK/WHT	NC
CAB9-09	GRN	NC
CAB9-10	RED	NC
CAB9-11	WHT	NC
CAB9-12	BLK	NC
CAB10-1	GRN	219-L
CAB10-2	BLK	127-R
CAB10-3	WHT	NC

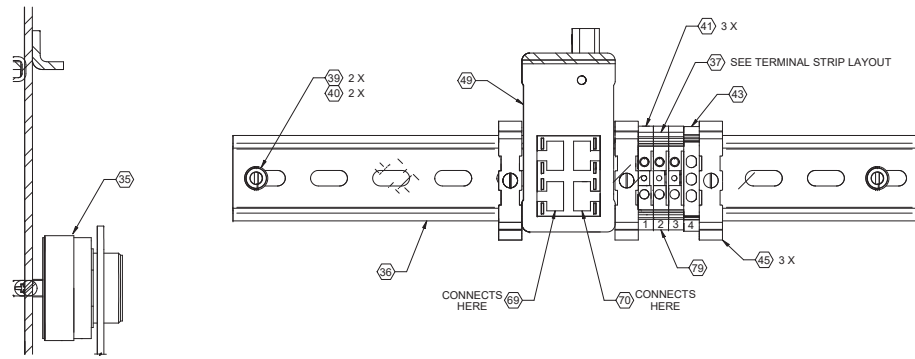
LOWER HARNESS	
WIRE CODE	DESTINATION TERMINAL BLOCK
CAB1-01	101-R
CAB1-02	104-R
CAB1-05	102-R
CAB1-06	103-R
CAB1-06	105-R
CAB1-07	106-R
CAB1-07	107-R
CAB1-08	108-R
CAB1-09	109-R
CAB1-10	110-R
CAB1-11	111-R
CAB1-12	112-R
CAB2-01	113-R
CAB2-02	114-R
CAB2-03	115-R
CAB2-04	116-R
CAB2-05	117-R
CAB2-06	118-R
CAB2-07	119-R
CAB2-08	120-R
CAB2-09	121-R
CAB3-10	214-R
CAB3-11	215-R
CAB3-12	216-R
0D	203-R
0EA	205-R
12V2	208-R
12V2	209-R
12V2	210-R
GND	130-R
GND	131-R

UPPER HARNESS	
WIRE CODE	DESTINATION TERMINAL BLOCK
CAB3-01	201-R
CAB3-02	202-R
CAB3-09	212-R
CAB3-09	213-R
0D	204-R
0EA	206-R
12V2	211-R
GND	132-R

AC HARNESS	
WIRE COLOR	DESTINATION TERMINAL BLOCK
RED	222-R
BLK	223-R
LT GRN	128-L

EST1-J5 CONNECTOR *		
CONNECTOR-PIN	WIRE COLOR	DESTINATION 3PN CONNECTOR-ITEMS 104, 105 & 106
EST1-05	GRN	PN C
EST1-03	BLK	PN B
EST1-10	WHT	PN A

\* CUT WIRES TO LENGTH NEEDED TO MATE WITH 3 PIN CONNECTOR ITEM 101 FROM THE E-STOP SWITCH.



**SECTION Q-Q  
1:1**  
FROM SECTION V-V SHEET 2  
DASH DIN RAIL COMPONENTS

**12 PIN DEUTSCH CONNECTOR  
ON LOWER HARNESS**

- NOTES:
- 1) REMOVE WEDGE FROM 12 PIN DEUTSCH CONNECTOR ON LOWER HARNESS
  - 2) CRIMP PINS (ITEM 77) TO WIRES SHOWN ABOVE & LABEL APPROPRIATELY
  - 3) REMOVE PLUGS FROM UNUSED HOLES 3 & 10
  - 4) INSTALL PINS IN CORRECT HOLES AS SHOWN ABOVE
  - 5) REINSTALL THE WEDGE ON THE 12 PIN DEUTSCH CONNECTOR

**NOTE:**  
SEE TERMINAL BLOCK TORQUE SPECIFICATIONS CHART PRIOR TO INSTALLING WIRES IN THE TERMINAL BLOCKS.

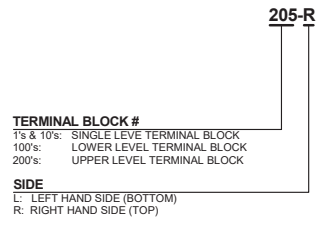
ITEM NO.	LT/PIN	MIN TORQUE (lb in)	MAX TORQUE (lb in)	MIN TORQUE (Nm)	MAX TORQUE (Nm)
41	4227190	5.3	7.1	0.6	0.8
42	4264183	5.3	7.1	0.6	0.8
43	4228646	5.3	7.1	0.6	0.8
44	4264180	5.3	7.1	0.6	0.8

LOWER LEVEL		UPPER LEVEL	
TERMINAL BLOCK #	LABEL	TERMINAL BLOCK #	LABEL
101	CAB1-01	201	CAB3-01
102	CAB1-05	202	CAB3-02
103	CAB1-05	203	0D
104	CAB1-02	204	0EA
105	CAB1-06	205	0EA
106	CAB1-06	206	0EA
107	CAB1-07	207	0EA
108	CAB1-08	208	12V2
109	CAB1-09	209	12V2
110	CAB1-10	210	12V2
111	CAB1-11	211	12V2
112	CAB1-12	212	CAB3-09
113	CAB2-01	213	CAB3-09
114	CAB2-02	214	CAB3-10
115	CAB2-03	215	CAB3-11
116	CAB2-04	216	CAB3-12
117	CAB2-05	217	0TA1
118	CAB2-06	218	HVAC4
119	CAB2-07	219	HVAC4
120	CAB2-08	220	0TA2
121	CAB2-09	221	HVAC3
122	CAB2-10	222	CAB4-05
123	CAB2-11	223	CAB4-06
124	CAB2-12	224	CAB4-07
125		225	CAB4-08
126		226	CAB4-09
127	HVAC2	227	CAB4-10
128	HVAC1	228	CAB4-11
129		229	CAB4-12
130		230	
131		231	
132		232	

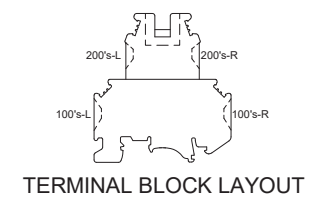
LOWER CONSOLE	UPPER CONSOLE
1 0D	1 0D
2 0EA	2 0EA
3 12V2	3 12V2
4	4

H  
G  
F  
E  
D  
C  
B  
A

**LEGEND**



[ ] : TERMINAL BRIDGE  
- - : SEPERATING PLATE  
— : SPACER COVER



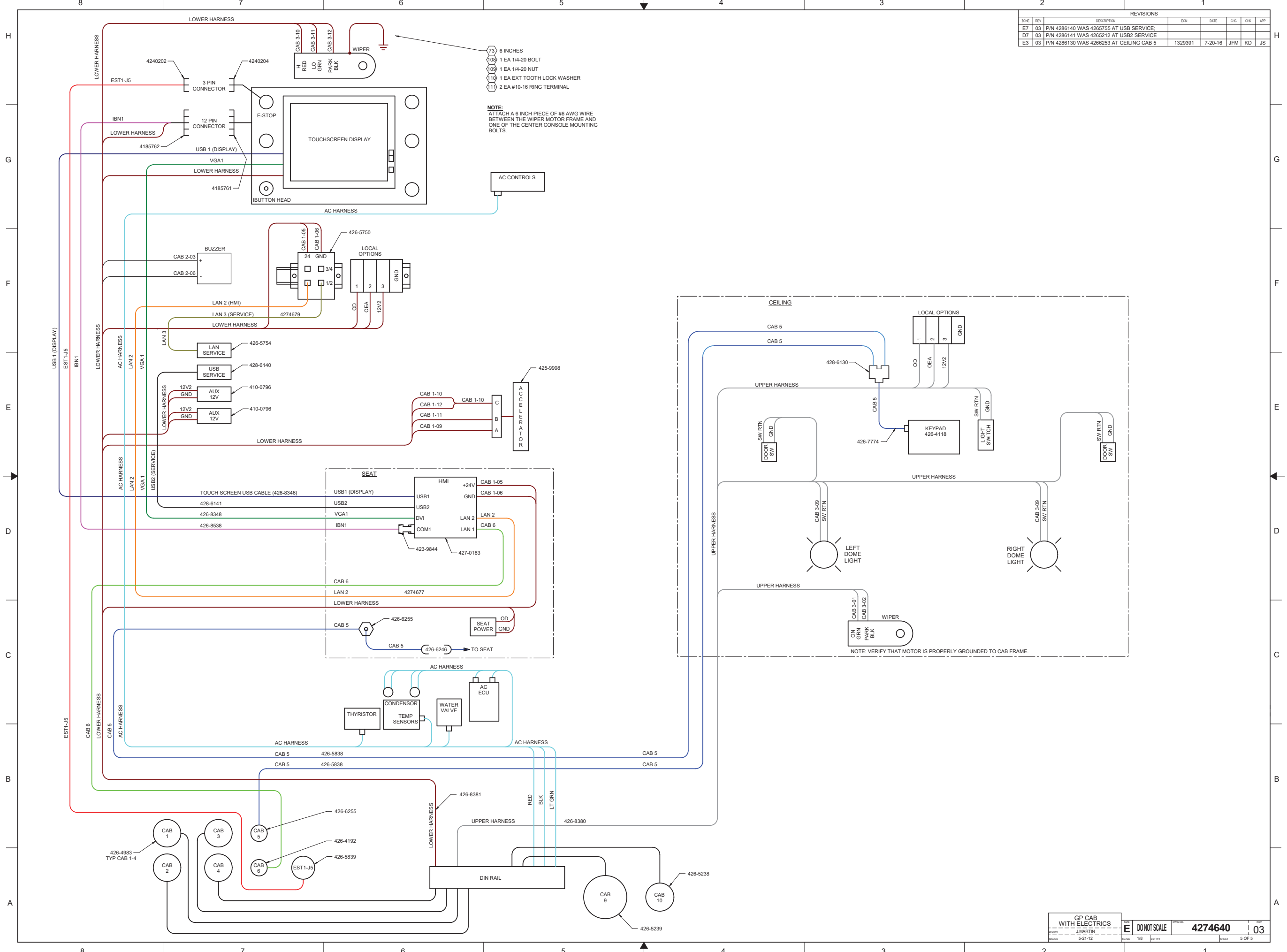
**TERMINAL BLOCK LAYOUT**

		REVISIONS			
ZONE	REV	DESCRIPTION	EN	DATE	CHK
E7	03	PIN 4286140 WAS 4285755 AT USB SERVICE.			
D7	03	PIN 4286141 WAS 4285212 AT USB2 SERVICE			
E3	03	PIN 4286130 WAS 4286253 AT CEILING CAB 5	1329391	7-20-16	JFM KD JS

- (73) 6 INCHES
- (108) 1 EA 1/4-20 BOLT
- (109) 1 EA 1/4-20 NUT
- (110) 1 EA EXT TOOTH LOCK WASHER
- (111) 2 EA #10-16 RING TERMINAL

**NOTE:**  
ATTACH A 6 INCH PIECE OF #6 AWG WIRE BETWEEN THE WIPER MOTOR FRAME AND ONE OF THE CENTER CONSOLE MOUNTING BOLTS.

**NOTE:** VERIFY THAT MOTOR IS PROPERLY GROUNDED TO CAB FRAME.





# **Front Frame Harness Group**

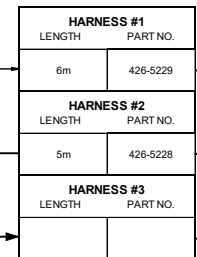




REV		DESCRIPTION	EN	DATE	CHK	CHK	APP
00	RELEASE		NL11-0436	6-16-11	LW	BAS	BS
01	SEE SHEET 1 FOR CHANGES		NL11-1781	8-31-11	LW	BAS	BS
02	NO CHG THIS SHEET; SEE SHEET 1 FOR CHG		NL11-1796	9-14-11	JFM	BS	BS
03	NO CHG THIS SHEET; SEE SHEET 1 FOR CHG		NL11-1818	10-14-11	JFM	BS	BS
04	CHGD LGTH & PART NO. AT FPL1, 2 HARNESS 1, 2, 3		1338284	1-12-17	JFM	JPS	JS
05	SEE SHEET 1		1355459	12/11/17	CTM	RJM	RP

**\*\* BOX: PCP2**  
DESCRIPTION: PILOT CONTROL PANEL #2

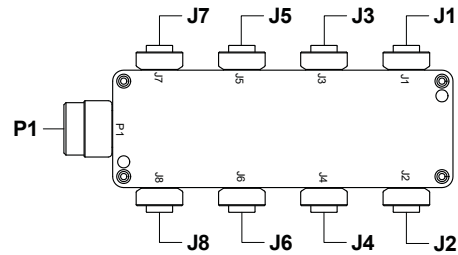
**LOW VOLTAGE CONTROL CABINET**



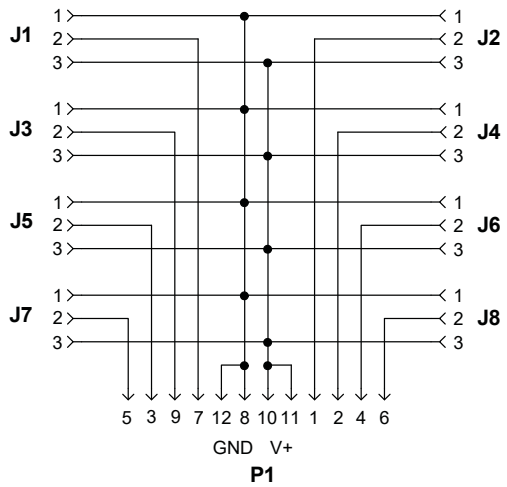
HARNESS CODE	SIGNAL PIN CODE	DEVICE DESCRIPTION	HARNESS #1			HARNESS #2			HARNESS #3			CONNECTOR		PINOUT
			LENGTH / TYPE	PART NO.	LENGTH / TYPE	PART NO.	LENGTH / TYPE	PART NO.	LENGTH / TYPE	PART NO.	TYPE	PART NO.		
PCP2-J7	PCP2-05	HOIST CYL ROD XDCR	1.4m	426-4197	1m XDCR	426-5234					CAP - MALE TURCK (PART OF HYD PANEL ASSY)	** 426-5200		
PCP2-J5	PCP2-03	* CLAMSEHLL CLOSE PILOT SOL (OPT)									CAP - MALE TURCK (PART OF HYD PANEL ASSY)	** 426-5200		
PCP2-J3	PCP2-09	HOIST CYL BASE XDCR	1m XDCR	426-5234	1.4m	426-4197								
PCP2-J1	PCP2-07	** GREATEST PILOT CMD XDCR	1m XDCR	426-5234										
PCP2-J2	PCP2-01	* CLAMSEHELL OPEN PILOT SOL (OPT)									CAP - MALE TURCK (PART OF HYD PANEL ASSY)	** 426-5200		
PCP2-J4	PCP2-02	** PILOT SUPPLY XDCR	1m XDCR	426-5234										
PCP2-J6	PCP2-04	** DUMP PRESS REDUCING SOL	1m DN	426-5233										
PCP2-J8	PCP2-06	** FLOAT SOL	1m DN	426-5233										

CABLE	DESCRIPTION	HARNESS #1		HARNESS #2		HARNESS #3		CONNECTOR	
		LENGTH / TYPE	PART NO.	LENGTH / TYPE	PART NO.	LENGTH / TYPE	PART NO.	TYPE	PART NO.
FPL1	FRONT POLE LIGHT	3m	427-4511	3m	427-4511				
FPL2	FRONT POLE LIGHT	3m	427-4511	3m	427-4511	3m	427-4511		

**BREAKOUT BOX 12 PIN - 8 X 3 PIN**  
(P/N: 426-5235)



TOP VIEW - BREAKOUT BOX



SCHEMATIC - BREAKOUT BOX

- NOTES:
- 1) \* INDICATES MACHINE OPTION — SHOWN FOR REFERENCE ONLY.
  - 2) \*\* PART OF HYD PANEL ASSY 427-1092.

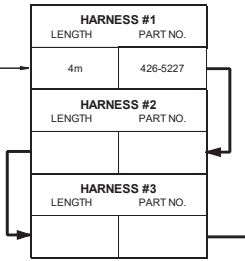
# **Rear Frame Harness Group**





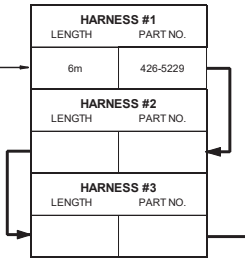
REVISIONS						
ZONE	REV	DESCRIPTION	EN	DATE	CHK	APP
	00	RELEASE	NL11-0436	6-16-11	LW	BAS BS
	01	SEE SHEET 1 FOR CHANGES	NL11-1768	8-02-11	LW	BAS BS
	02	CHGD STR2 AT STR INT FACE & RFF1-J8 HRN J3	NL11-1796	9-14-11	JFM	BS BS
	03	NO CHG THIS SHEET; SEE SHEET 1 FOR CHG	NL11-1818	10-14-11	JFM	BS BS
	04	NO CHG THIS SHEET; SEE SHEET 1 FOR CHG	NL12-1524	2-10-12	JFM	BS BS

BOX: RFF1  
DESCRIPTION: REAR FRAME FRONT #1



HARNESS CODE	SIGNAL PIN CODE	DEVICE DESCRIPTION	HARNESS #1			HARNESS #2		HARNESS #3		CONNECTOR		PINOUT
			LENGTH / TYPE	PART NO.	LENGTH / TYPE	PART NO.	LENGTH / TYPE	PART NO.	TYPE	PART NO.		
RFF1-J7	RFF1-05	HYD RESERVOIR LEVEL SWITCH	6m OPEN	426-5232								BLK = BLU, GRN = BLK, WHT = RED
RFF1-J5	RFF1-03	HYD RESERVOIR OIL TEMP XDCR	2m	426-5231	1m XDCR	426-5234						
RFF1-J3	RFF1-09									CAP - MALE TURCK (SUPPLIED WITH TURCK BOX)		
RFF1-J1	RFF1-07	KLENZ RESERVOIR AIR XDCR	3m	426-5213	1m XDCR	426-5234						
RFF1-J2	RFF1-01	HYD TANK DUMP SOL	5m	426-6240								
RFF1-J4	RFF1-02									CAP - MALE TURCK (QTY - 1)	426-5200	
RFF1-J6	RFF1-04	STEER POSITION XDCR	3m	426-7338								
RFF1-J8	RFF1-06	AUX FAN ENABLE SOL (OPT)	5m	426-6240	1m DN	426-5233				CAP - MALE TURCK (SUPPLIED WITH TURCK BOX)		

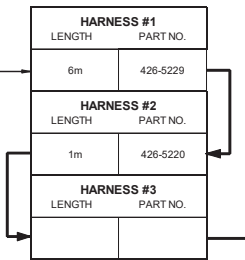
BOX: RFF2  
DESCRIPTION: REAR FRAME FRONT #2



HARNESS CODE	SIGNAL PIN CODE	DEVICE DESCRIPTION	HARNESS #1			HARNESS #2		HARNESS #3		CONNECTOR		PINOUT
			LENGTH / TYPE	PART NO.	LENGTH / TYPE	PART NO.	LENGTH / TYPE	PART NO.	TYPE	PART NO.		
RFF2-J7	RFF2-05	AUX STEER ENABLE (OPT)	3m	426-5213						CAP - MALE TURCK (SUPPLIED WITH TURCK BOX)		
RFF2-J5	RFF2-03	AUX STEER SUPPLY PRESS SWITCH (OPT)	3m	426-5213						CAP - MALE TURCK (SUPPLIED WITH TURCK BOX)		
RFF2-J3	RFF2-09									CAP - MALE TURCK (QTY - 1)	426-5200	
RFF2-J1	24V ONLY	AIR DRYER HEATER	6m OPEN	426-5232						WIRE HARNESS AIR DRYER	425-8492	WHT = 1, GRN = 2
RFF2-J2	RFF2-01	RADIATOR FAN CONTROL SOL	5m	426-6240	1m DN	426-5233						
RFF2-J4	RFF2-02	MAINTENANCE LIGHT MIDDLE RIGHT	6m OPEN	426-5232						2 PIN DEUTSCH	426-1175	BLK = 2, GRN = 1
RFF2-J6	RFF2-04	STEER LEFT OUTPUT	3m	426-5213								
RFF2-J8	RFF2-06	STEER RIGHT OUTPUT	3m	426-5213								

STEERING INTERFACE		HARNESS CODE	SIGNAL PIN CODE	DEVICE DESCRIPTION	LENGTH / TYPE	PART NO.	LENGTH / TYPE	PART NO.	LENGTH / TYPE	PART NO.	CONNECTOR	PINOUT	
		STR1	STR1-02	STEER VALVE	6m OPEN	426-5232					DN	424-0140	BLK = 2, WHT = 1, GRN = GDM
		STR2	STR2-02	AUX STEER SOL (OPT)	6m OPEN	426-5232					DN	424-0140	BLK = 1, GRN = 2

BOX: RFF3  
DESCRIPTION: REAR FRAME FRONT #3



HARNESS CODE	SIGNAL PIN CODE	DEVICE DESCRIPTION	HARNESS #1			HARNESS #2		HARNESS #3		CONNECTOR		PINOUT
			LENGTH / TYPE	PART NO.	LENGTH / TYPE	PART NO.	LENGTH / TYPE	PART NO.	TYPE	PART NO.		
RFF3-J7	RFF3-05	FAST HOIST PUMP XDCR	1m XDCR	426-5234								
RFF3-J5	RFF3-03	HOIST/BUCKET PUMP A XDCR	1m XDCR	426-5234								
RFF3-J3	RFF3-09	HOIST/BUCKET PUMP B XDCR	1m XDCR	426-5234								
RFF3-J1	RFF3-07	HOIST/BUCKET PUMP C XDCR	1m XDCR	426-5234								
RFF3-J2	RFF3-01	ACCESSORY PUMP XDCR	1m XDCR	426-5234								
RFF3-J4	RFF3-02	STEER PUMP A XDCR	1m XDCR	426-5234								
RFF3-J6	RFF3-04	STEER PUMP B XDCR	1m XDCR	426-5234								
RFF3-J8	RFF3-06	HYD OIL COOLER BYPASS SOL	2m	426-5231	1m DN	426-5233						

LOW VOLTAGE CONTROL CABINET

NOTE:  
\* INDICATES MACHINE OPTION  
--- SHOWN FOR REFERENCE ONLY.

8

7

6

5

4

3

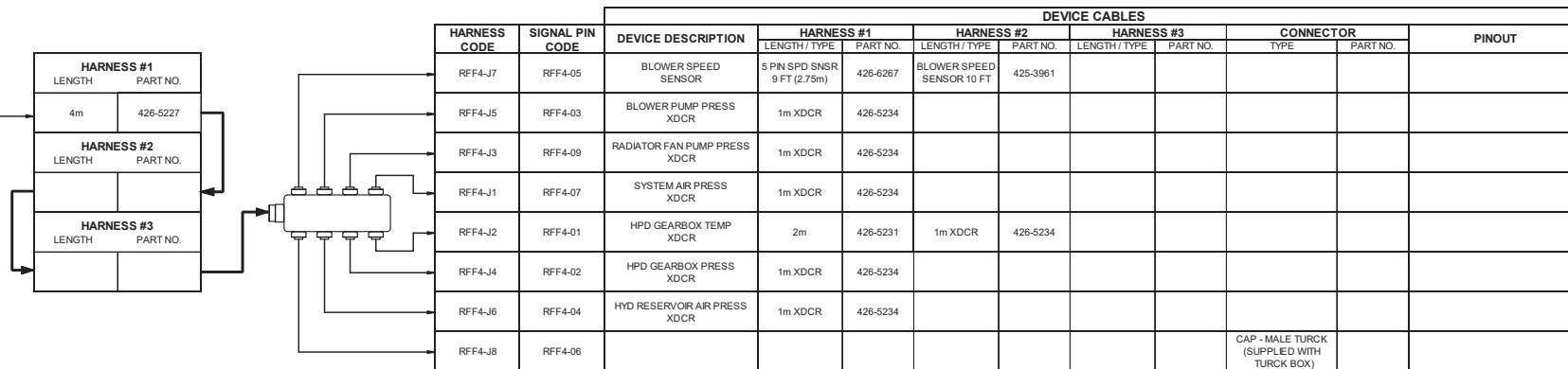
2

1

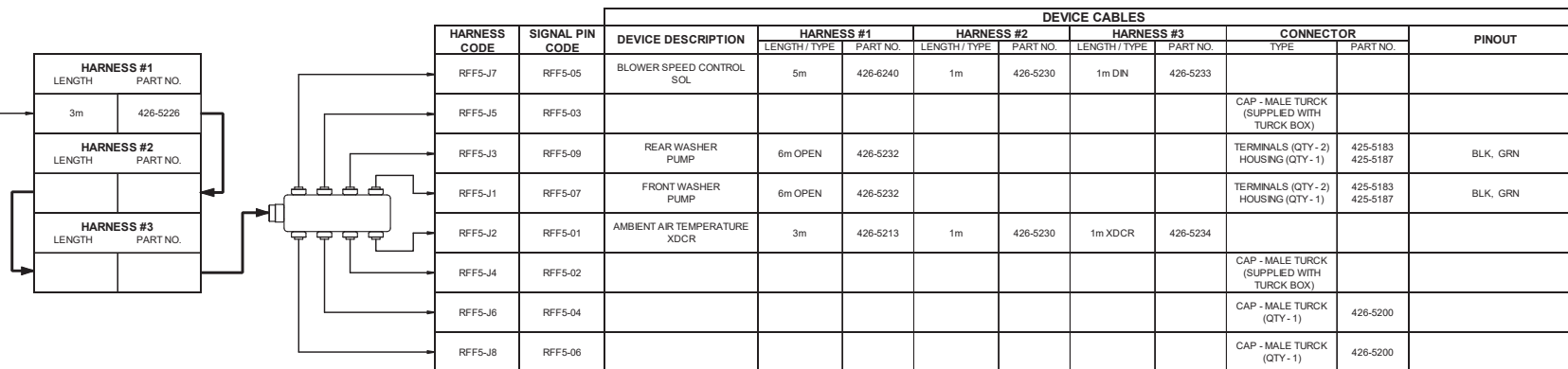
REVISIONS							
ZONE	REV	DESCRIPTION	EN	DATE	CHK	CHK	APP
	00	RELEASE	NL11-0436	6-16-11	LW	BAS	BS
	01	SEE SHEET 1 FOR CHANGES	NL11-1768	8-02-11	LW	BAS	BS
	02	NO CHG THIS SHEET; SEE SHEET 1 & 2 FOR CHG	NL11-1796	9-14-11	JFM	BS	BS
	03	NO CHG THIS SHEET; SEE SHEET 1 FOR CHG	NL11-1818	10-14-11	JFM	BS	BS
	04	NO CHG THIS SHEET; SEE SHEET 1 FOR CHG	NL12-1524	2-10-12	JFM	BS	BS

LOW VOLTAGE CONTROL CABINET

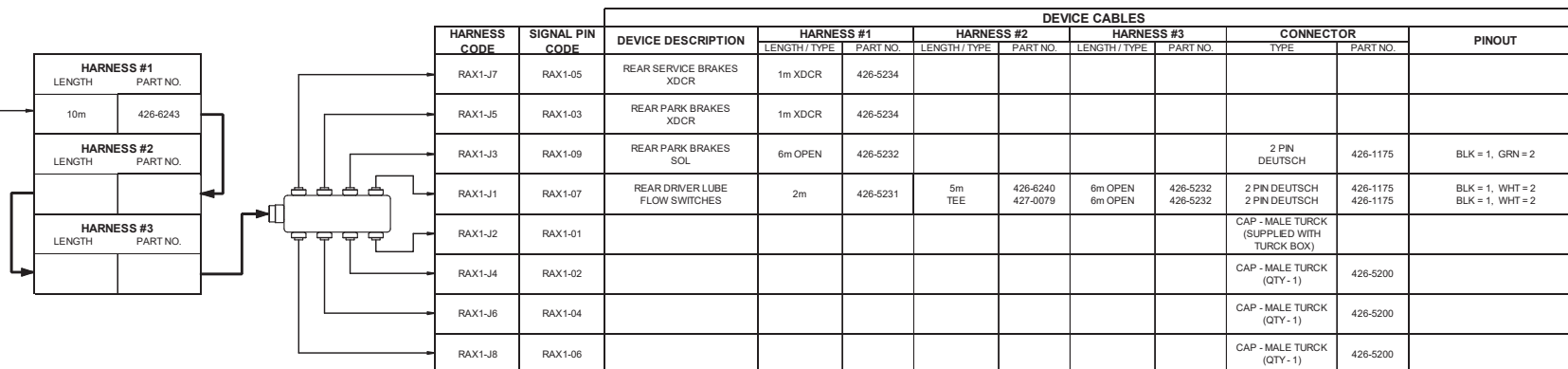
BOX: RFF4  
DESCRIPTION: REAR FRAME FRONT #4



BOX: RFF5  
DESCRIPTION: REAR FRAME FRONT #5



BOX: RAX1  
DESCRIPTION: REAR AXLE #1



NOTE:  
\* INDICATES MACHINE OPTION  
--- SHOWN FOR REFERENCE ONLY.

8

7

6

5

4

3

2

1

		REVISIONS					
ZONE	REV	DESCRIPTION	EN	DATE	CHK	CHK	APP
	00	RELEASE	NL11-0436	6-16-11	LW	BAS	BS
	01	SEE SHEET 1 FOR CHANGES	NL11-1768	8-02-11	LW	BAS	BS
	02	NO CHG THIS SHEET; SEE SHEET 1 & 2 FOR CHG	NL11-1796	9-14-11	JFM	BS	BS
	03	NO CHG THIS SHEET; SEE SHEET 1 FOR CHG	NL11-1818	10-14-11	JFM	BS	BS
	04	NO CHG THIS SHEET; SEE SHEET 1 FOR CHG	NL12-1524	2-10-12	JFM	BS	BS

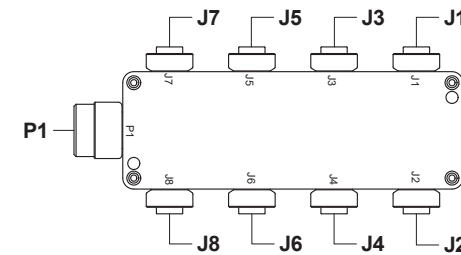
**LOW VOLTAGE CONTROL CABINET**

CABLE	DESCRIPTION	HARNESS #1		HARNESS #2		HARNESS #3		CONNECTOR	
		LENGTH / TYPE	PART NO.	LENGTH / TYPE	PART NO.	LENGTH / TYPE	PART NO.	TYPE	PART NO.
KLZ1	KLENZ BOX	4m	426-5227	1.5m	426-5207				
MBR1	MIRROR BAR	8m	426-6242	1.5m	426-5207				
MBR2	MIRROR BAR	8m	426-6242	1.5m	426-5207				
DCP1	DRIVE COOLING PUMP	10m	426-6241	3m	426-5213				
EIC1	ENGINE INTERFACE CABINET	10m	426-6243	4m	426-5227				
EIC3	ENGINE INTERFACE CABINET	10m	426-6251	CABLE TEE	426-6253	4.3m 4.3m	426-5838 426-5838		
	(EIC3 CONT.)	CABLE TEE 0.4m / WATER PUMP	426-6253 426-7798	0.5m	426-6246	CABLE TEE 0.4m / WATER PUMP	426-6253 426-7798		
	(EIC3 CONT.)	0.5m	426-6246	CABLE TEE 0.4m / WATER PUMP	426-6253 426-7798	TERMINATOR	426-6254		
CSP1	CONTROL SWITCH PANEL	10m	426-6243	3m	426-5226				
RCL1	REAR COWL	10m	426-6243	4m	426-5227	2m	426-5221		
RCL2	REAR COWL	10m	426-6241	5m	426-6240	1m	426-5230		
SRC1	SR CABINET	1m	426-5220	HARNESS PROVIDED AS PART OF SR CABINET ASSY					
SRC2	SR CABINET	1m	426-6249	HARNESS PROVIDED AS PART OF SR CABINET ASSY					
LLC1	LADDER LIGHT CONTROL	3m	426-5213	3m	426-5213	1m	426-5230		
CAB1	CAB	1.5m	426-5207						
CAB2	CAB	1.5m	426-5207						
CAB3	CAB	1.5m	426-5207						
CAB4	CAB	1.5m	426-5207						
CAB5	CAB	1.5m	426-4188						
CAB6	CAB	1.5m	426-4195						
CAB9	CAB TO AC CONDENSOR	4.2m	426-7339						
CAB10	CAB TO AC CLUTCH	1.4m	426-4197	1m DIN	426-5233				

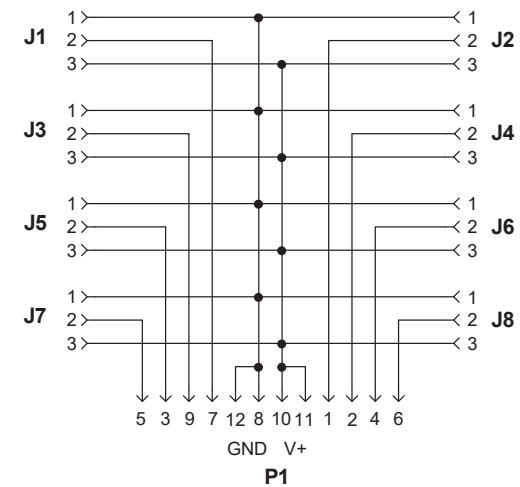
CABLE	DEVICE DESCRIPTION	LENGTH/TYPE	PART NO.	PINOUT
CSP2	LADDER LIMIT SWITCH	6m OPEN	426-5232	POWER STEP: WHT, BLK = GRN

ISOLATION AND CONTROL SWITCHES

**BREAKOUT BOX 12 PIN - 8 X 3 PIN**  
(P/N: 426-5235)



**TOP VIEW - BREAKOUT BOX**



**SCHEMATIC - BREAKOUT BOX**

NOTE:  
\* INDICATES MACHINE OPTION  
--- SHOWN FOR REFERENCE ONLY.